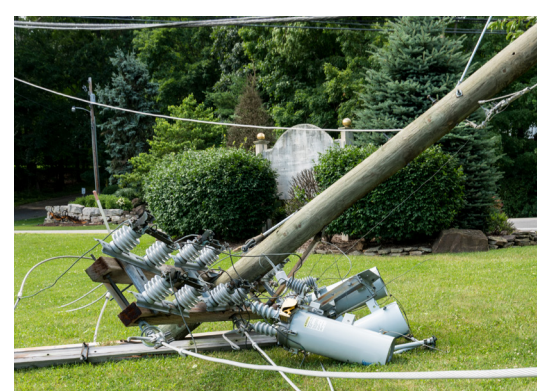




MAY 2026

CO-OP CURRENT



MAKE THE RIGHT CALL

Know Who to Call and How to Stay Safe Around Electricity

At South Central Indiana REMC, safety is always our top priority. With May recognized as Electrical Safety Month, we want to help our members understand how to stay safe around electricity and who to call in different situations.

SCI REMC is responsible for delivering electricity to your home through our equipment, including substations, power lines, poles, and meters. Our role primarily covers everything up to the connection point at your home. But what about the electrical systems inside your house? That's where a licensed electrician comes in.

Electricians handle interior electrical needs such as lighting, security systems, and your home's wiring. In short, anything inside your home should be handled by a qualified electrician for maintenance or repairs, while outside, electric poles, power lines, and the meter (excluding the meter base) are maintained by SCI REMC.

A simple way to tell where an issue may be is this: If your entire home loses power, the problem likely originates

outside and falls under SCI REMC's responsibility. If only part of your home is affected, the issue is probably within your internal electrical system.

In the case of an emergency outside your home, your first call should be 911 if the situation is life threatening and needs immediate assistance. SCI REMC works closely with first responders to support emergency situations.

Call 911 immediately in situations such as a downed power line trapping you on your driveway or in your home or vehicle. Stay far away from the line. If you are in a vehicle, remain inside unless there is a fire.

You should also call 911 if a power line is causing sparks, burning, or igniting a tree or if there is a medical emergency during a power outage that requires immediate assistance.

SCI REMC encourages all members to make safe, informed decisions. ***If a situation is urgent or life threatening, always call 911 first.***

WHAT TO DO AROUND DOWNED POWER LINES

Power lines can fall when a pole is struck and may land on trees, driveways, or roads. These situations are extremely dangerous, and knowing what to do can save your life.

- Stay far away from any downed line. Never touch it or anything it may be in contact with, including trees, vehicles, or the ground nearby. Stay at least 35 feet away.
- If a line is on your car, stay inside the vehicle. Do not get out unless there is a fire.
- If you must exit due to fire, jump clear with both feet together and do not touch the car and ground at the same time. Move away by shuffling your feet.
- Do not drive over downed lines or through areas where lines may be on the road or driveway.
- If a line is on a fallen tree, do not touch or attempt to cut the tree, especially with a chain saw.
- Never attempt to move a power line or clear debris from it yourself.

Call 911 immediately, report the situation, and wait for first responders. ***Always assume any downed line is energized and dangerous until utility crews confirm it is safe.***

For emergency repairs and a list of approved electricians, visit sciremc.com/safety/emergency-repairs/.



WE WANT YOUR FEEDBACK!

Last chance to participate!

SCI REMC is conducting a survey, giving members the opportunity to share feedback and help guide future improvements.

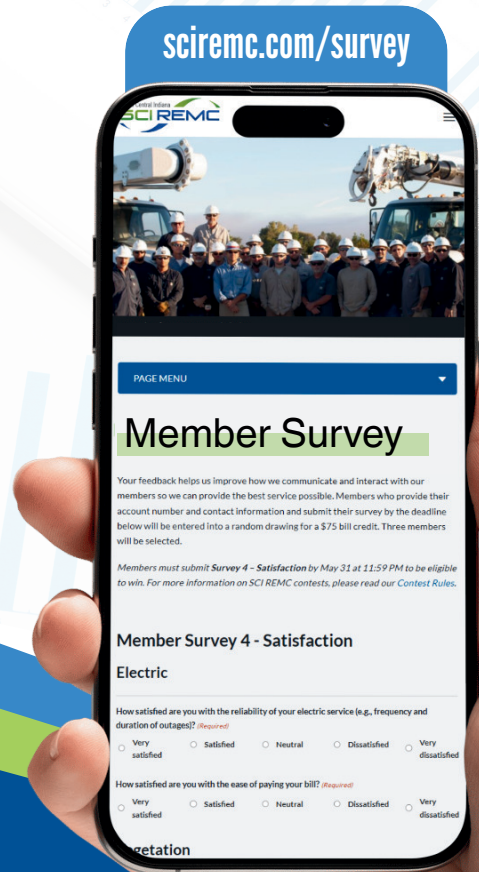
The deadline to take the survey is May 31.



Three participating members will be randomly selected to receive a

\$75

bill credit!



Chill out and SAVE!

Beat the heat and conquer the cold with our HVAC Tune-up rebate program!

Apply for our HVAC tune-up rebate and save up to 50%.

Visit sciremc.com/rebate to learn more.

